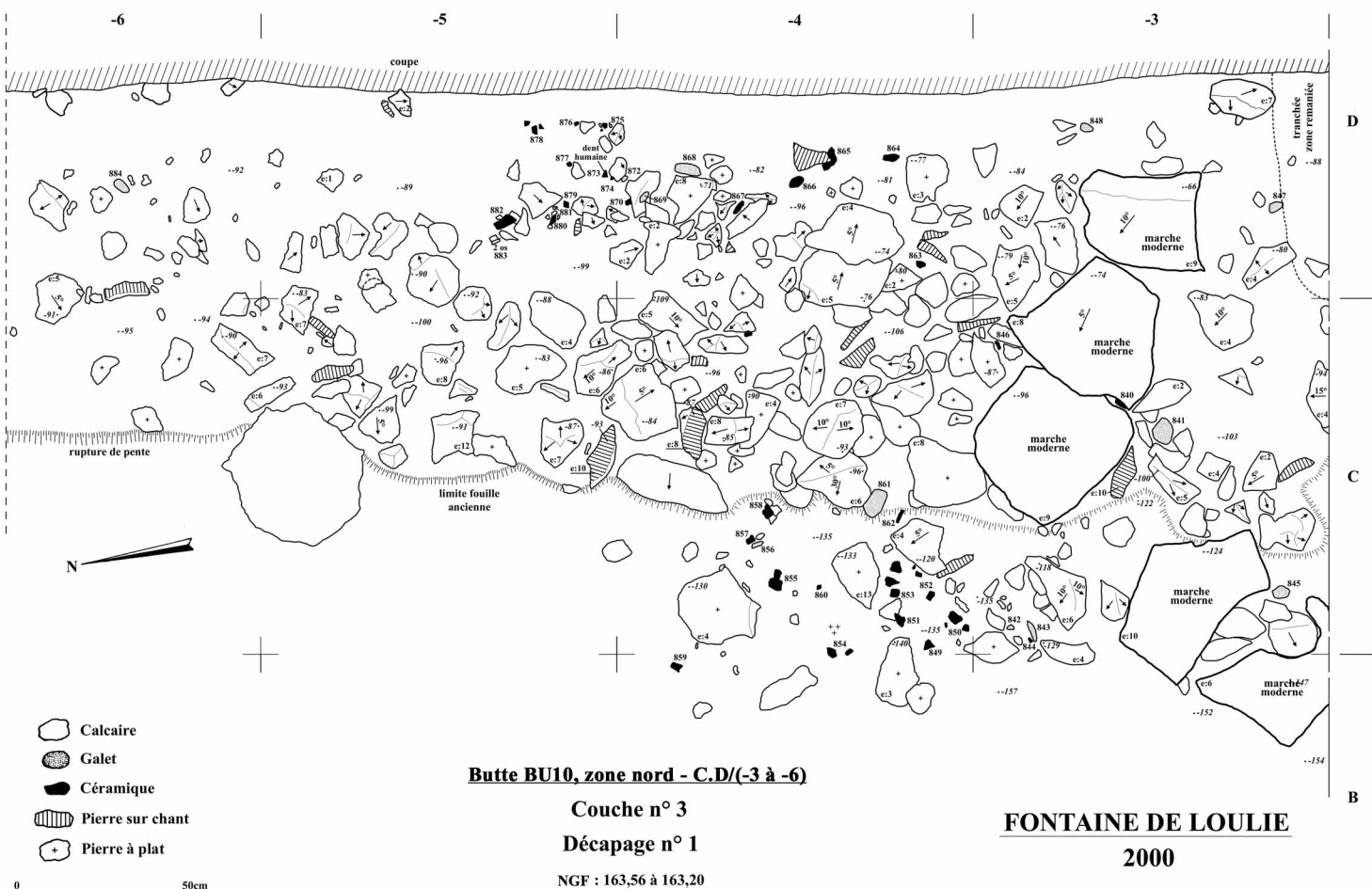
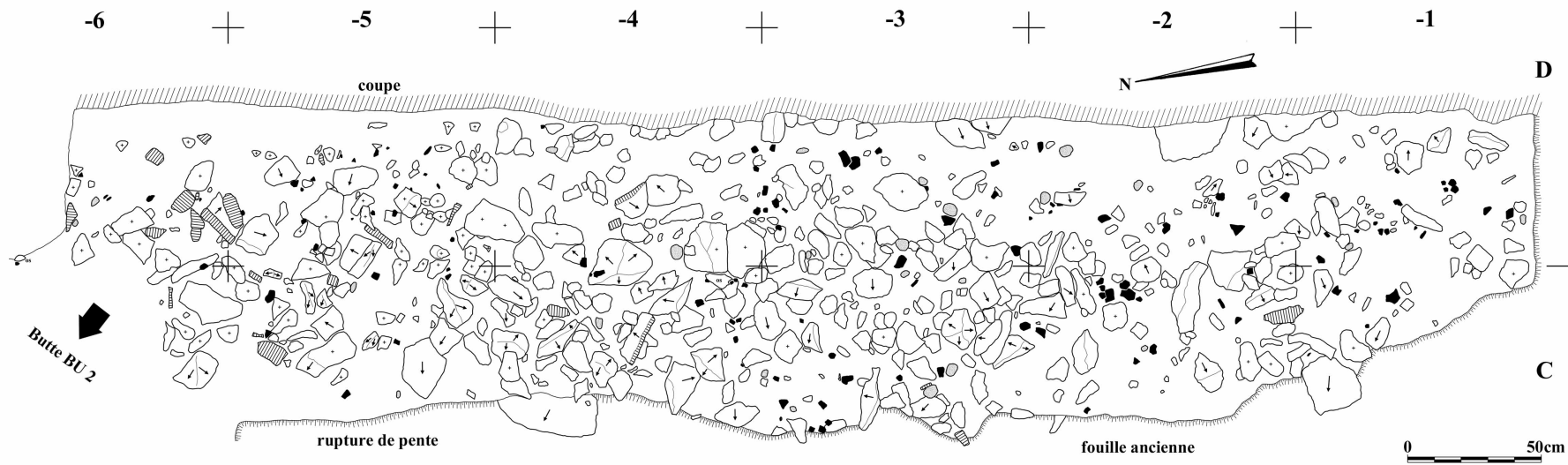


**Figure 26 - Butte BU10, zone nord, partie 1, décapage 1.**

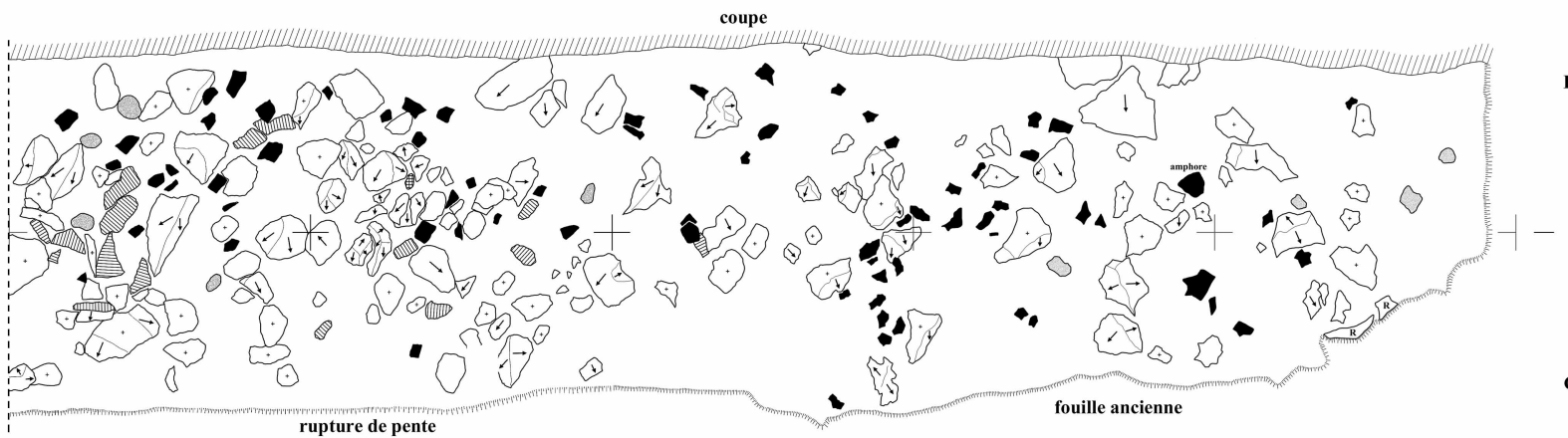


**Figure 27 - Butte BU10, couche 3, zone nord, partie 2, décapage 1.**

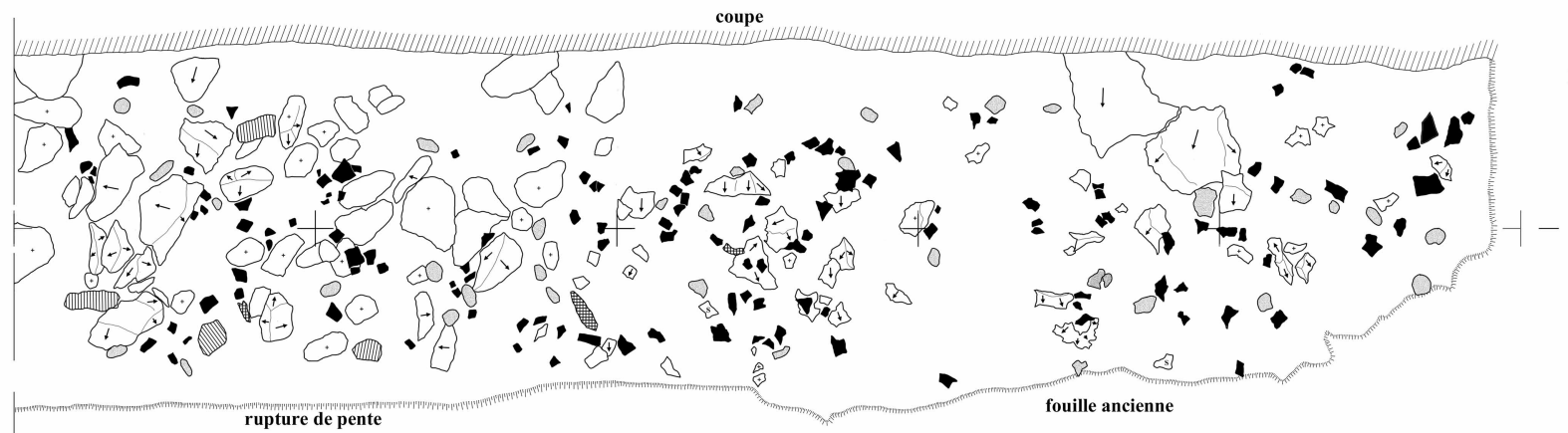


**BU10-Zone nord**  
**Couche n° 3**  
**Décapage n° 2**  
 NGF : 163.43 à 163.09  
**Plan n° 5**

- Calcaire
- Galet
- Céramique
- Pierre sur chant
- Pierre à plat
- Pierre rubéfiée
- Os
- S Silex



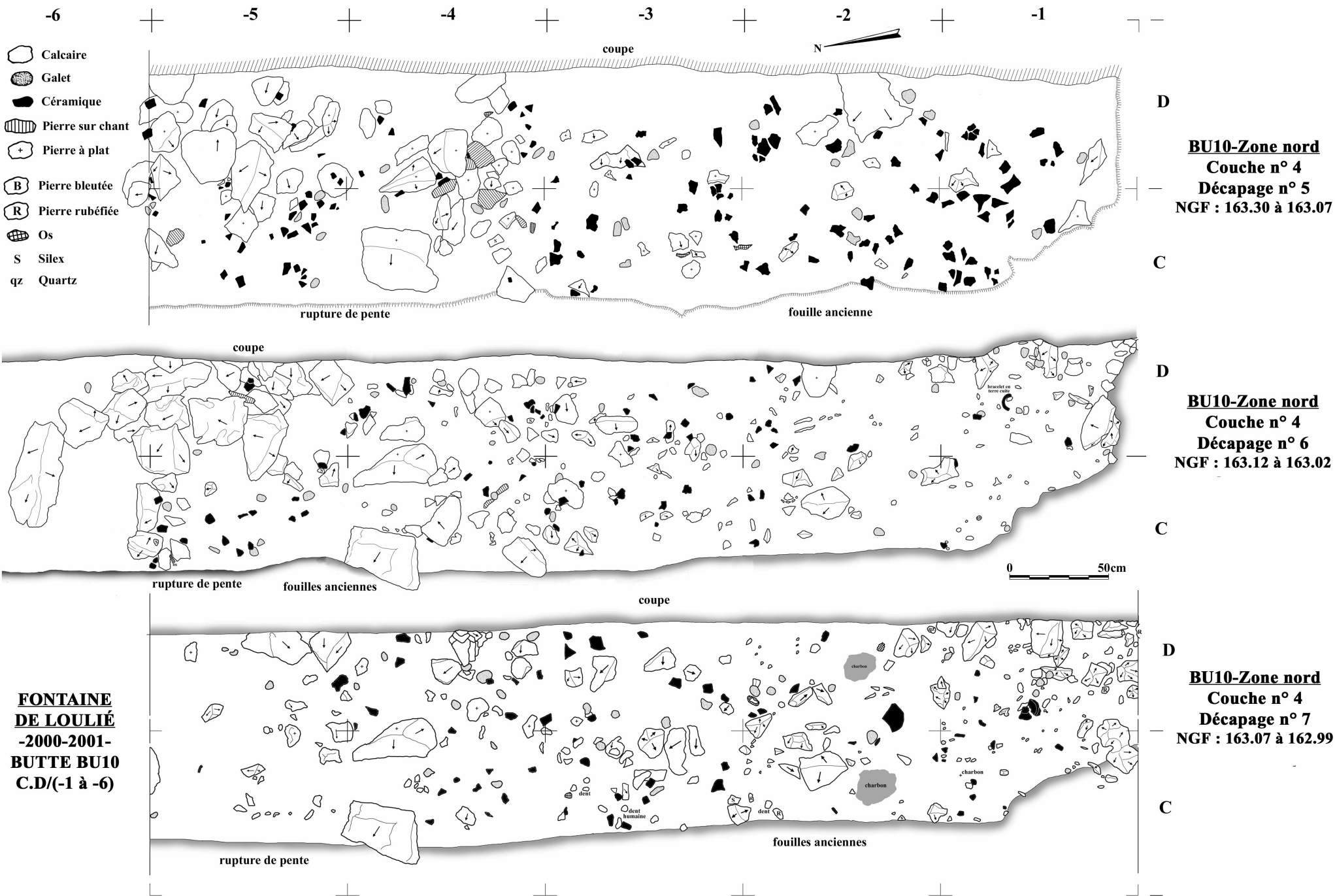
**BU10-Zone nord**  
**Couche n° 3**  
**Décapage n° 3**  
 NGF : 163.55 à 163.17  
**Plan n° 6**



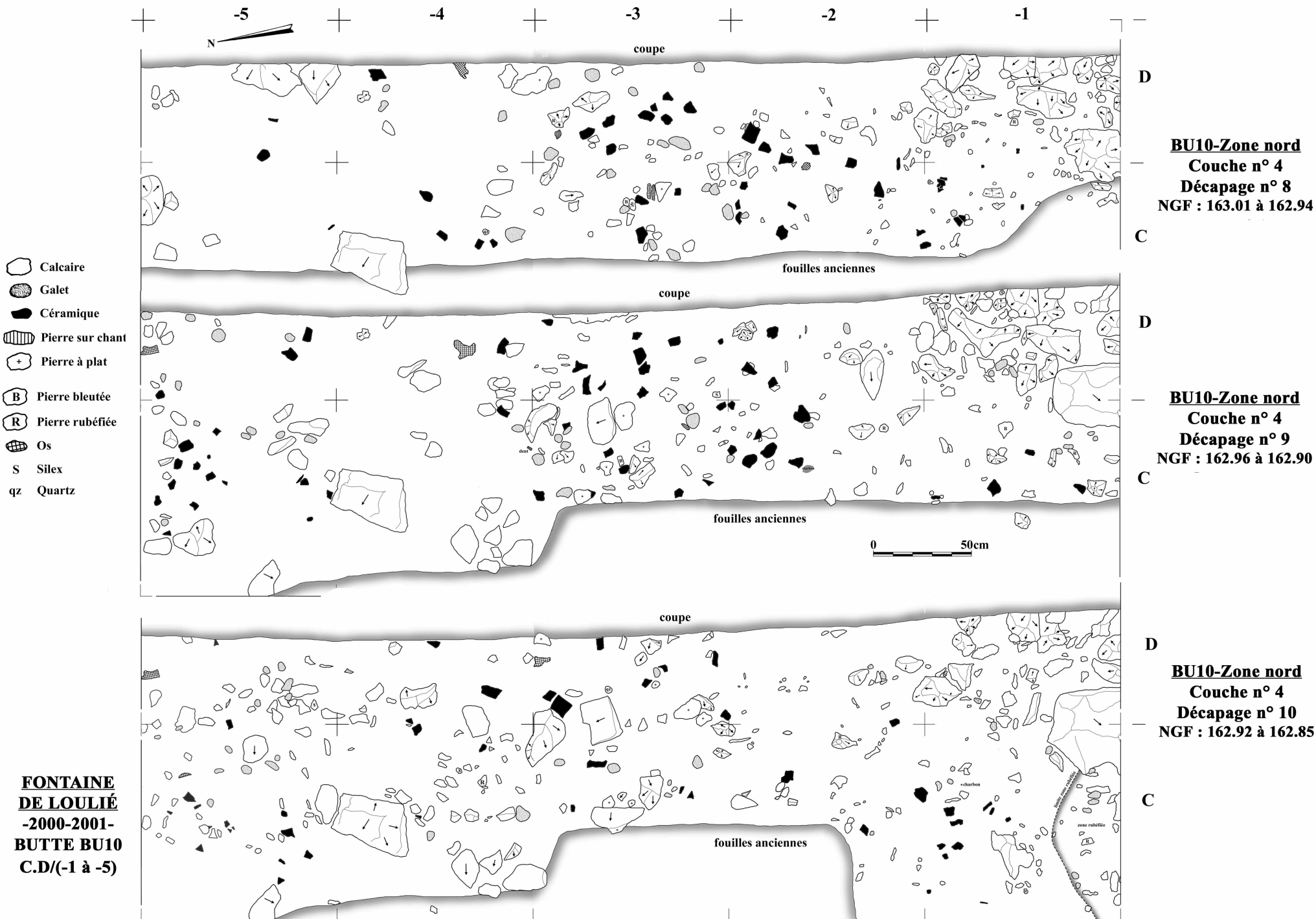
**BU10-Zone nord**  
**Couche n° 3**  
**Décapage n° 4**  
 NGF : 163.30 à 163.11  
**Plan n° 7**

**FONTAINE  
 DE LOULIÉ  
 -2000-2001-  
 BUTTE BU10  
 C.D/(-1 à -6)**

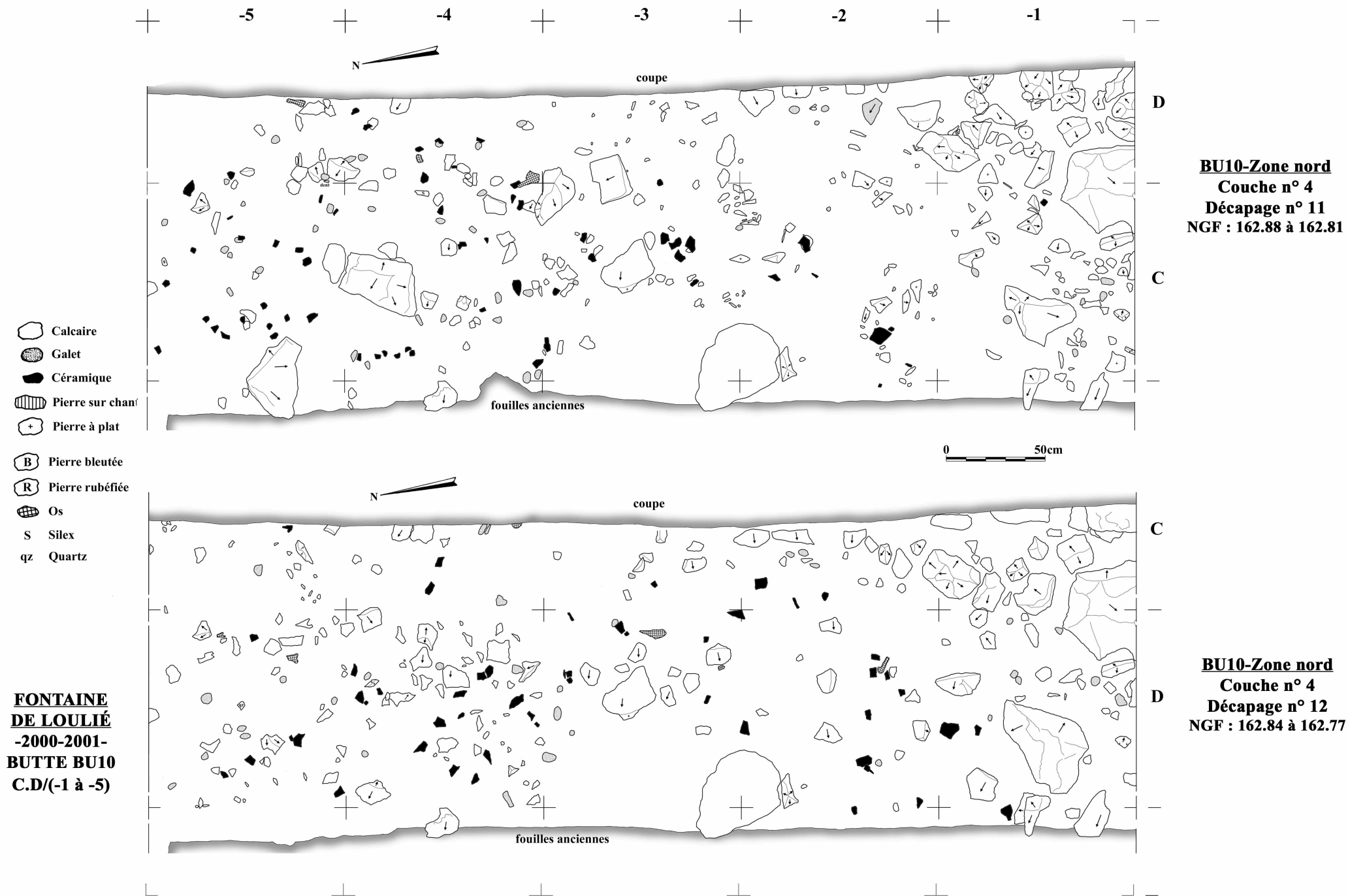
**Figures 28-29-30 - Butte BU10, zone nord, couche 3, décapages 2 à 4.**



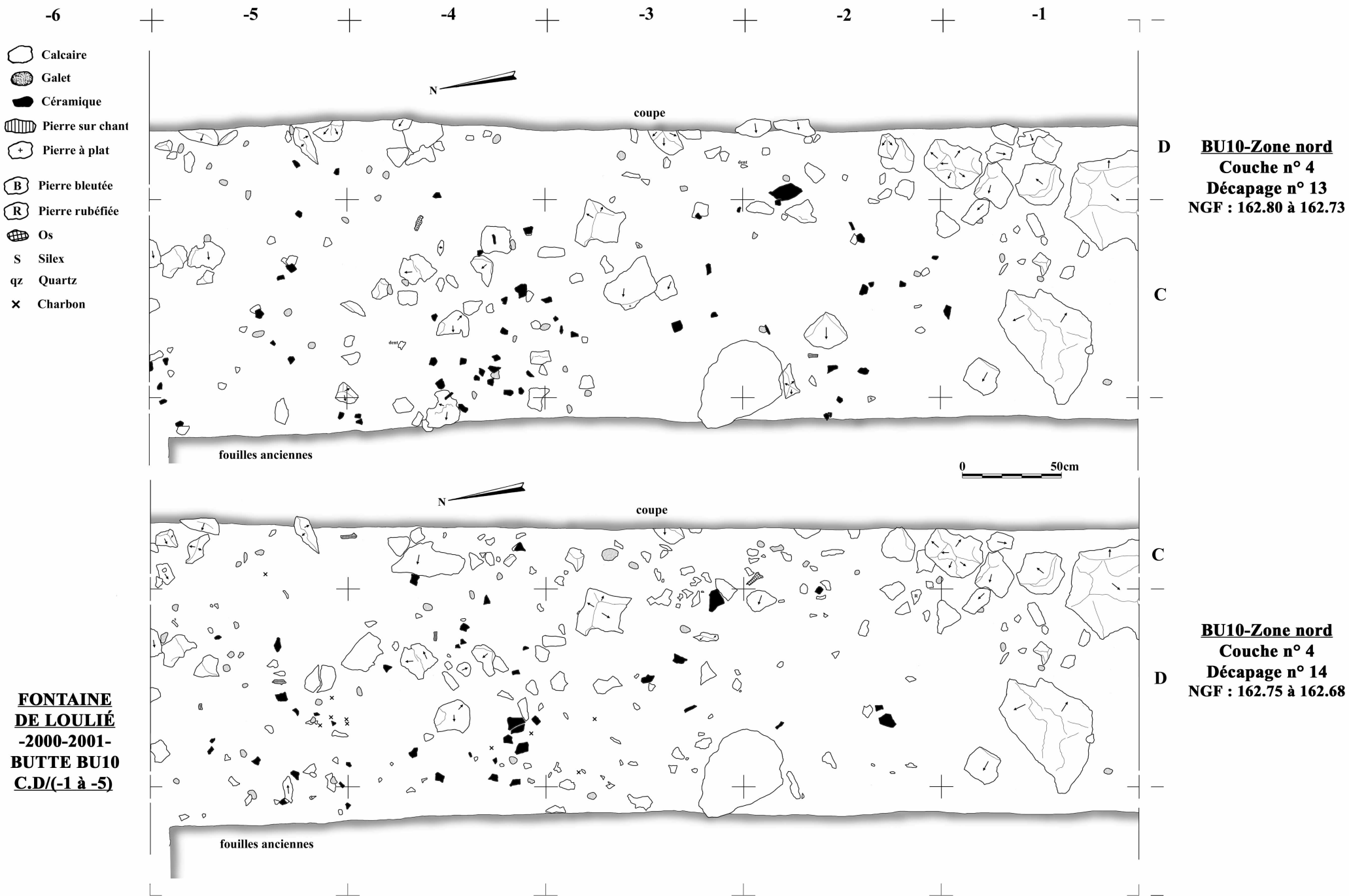
Figures 31-32-33 - Butte BU10, zone nord, couche 4, décapages 5 à 7.



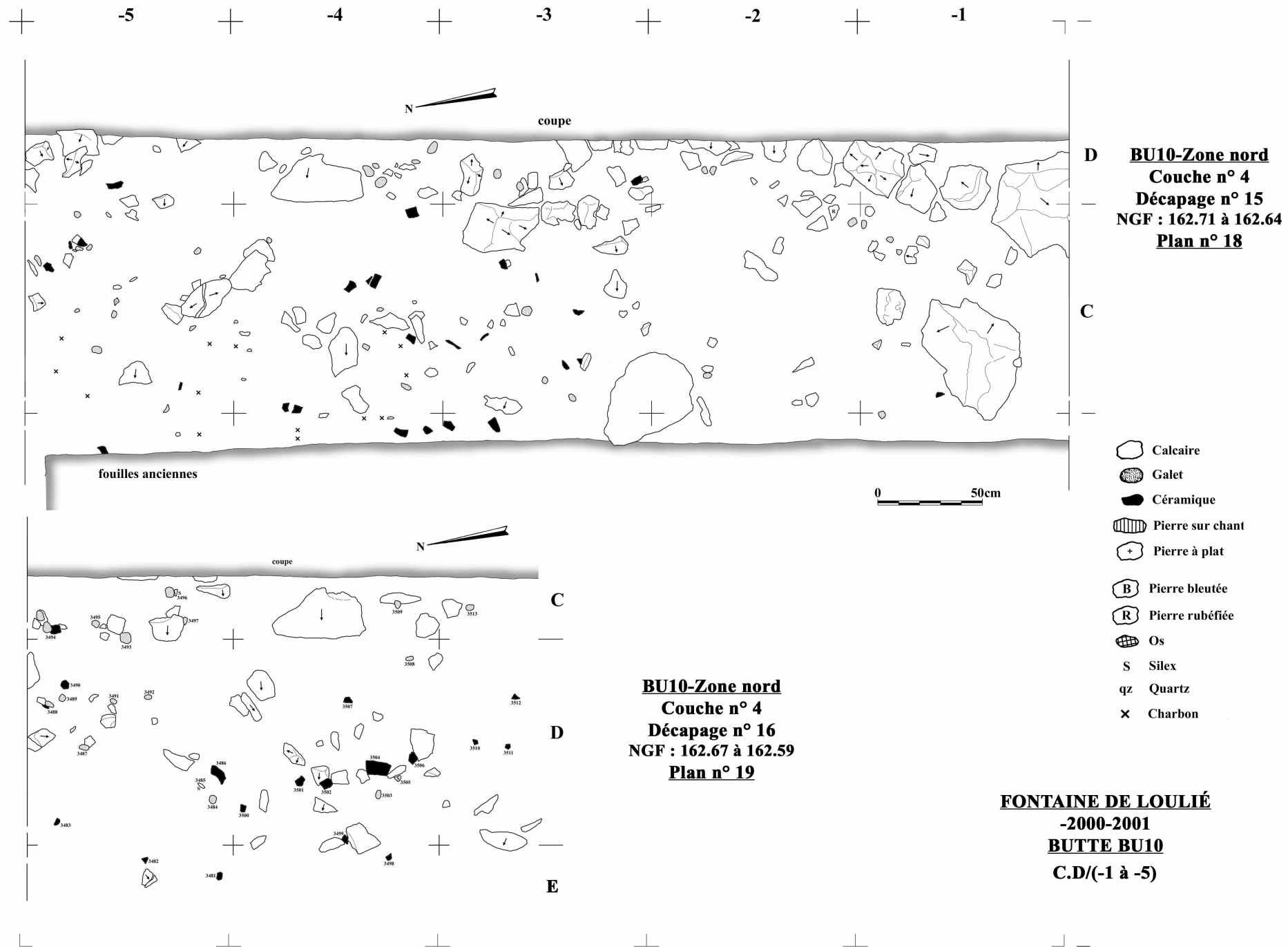
**Figures 34-35-36 - Butte BU10, zone nord, couche 4, décapages 8 à 10.**



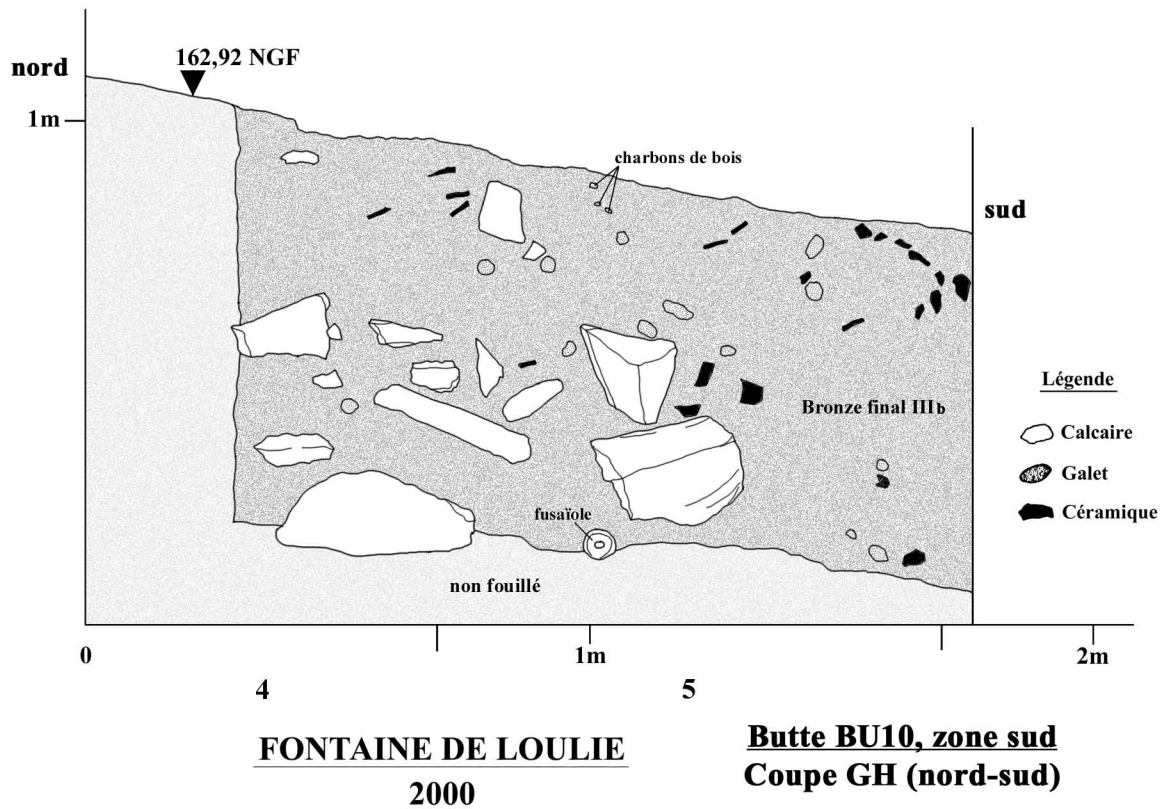
Figures 37-38 - Butte BU10, zone nord, couche 4, décapages 11 et 12.



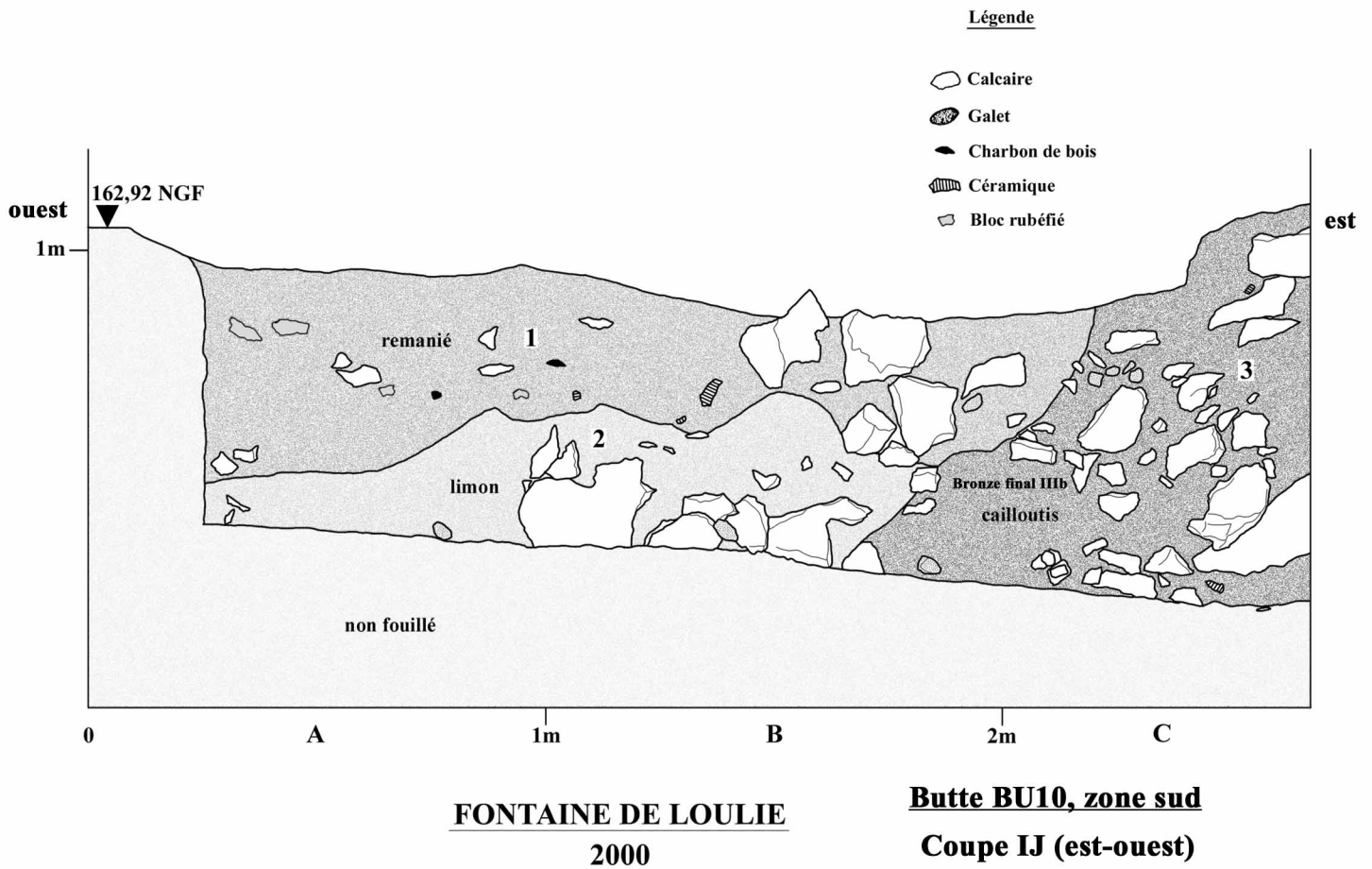
Figures 39-40 - Butte BU10, zone nord, couche 4, décapages 13 et 14.



Figures 41-42 - Butte BU10, zone nord, couche 4, décapages 15 et 16.

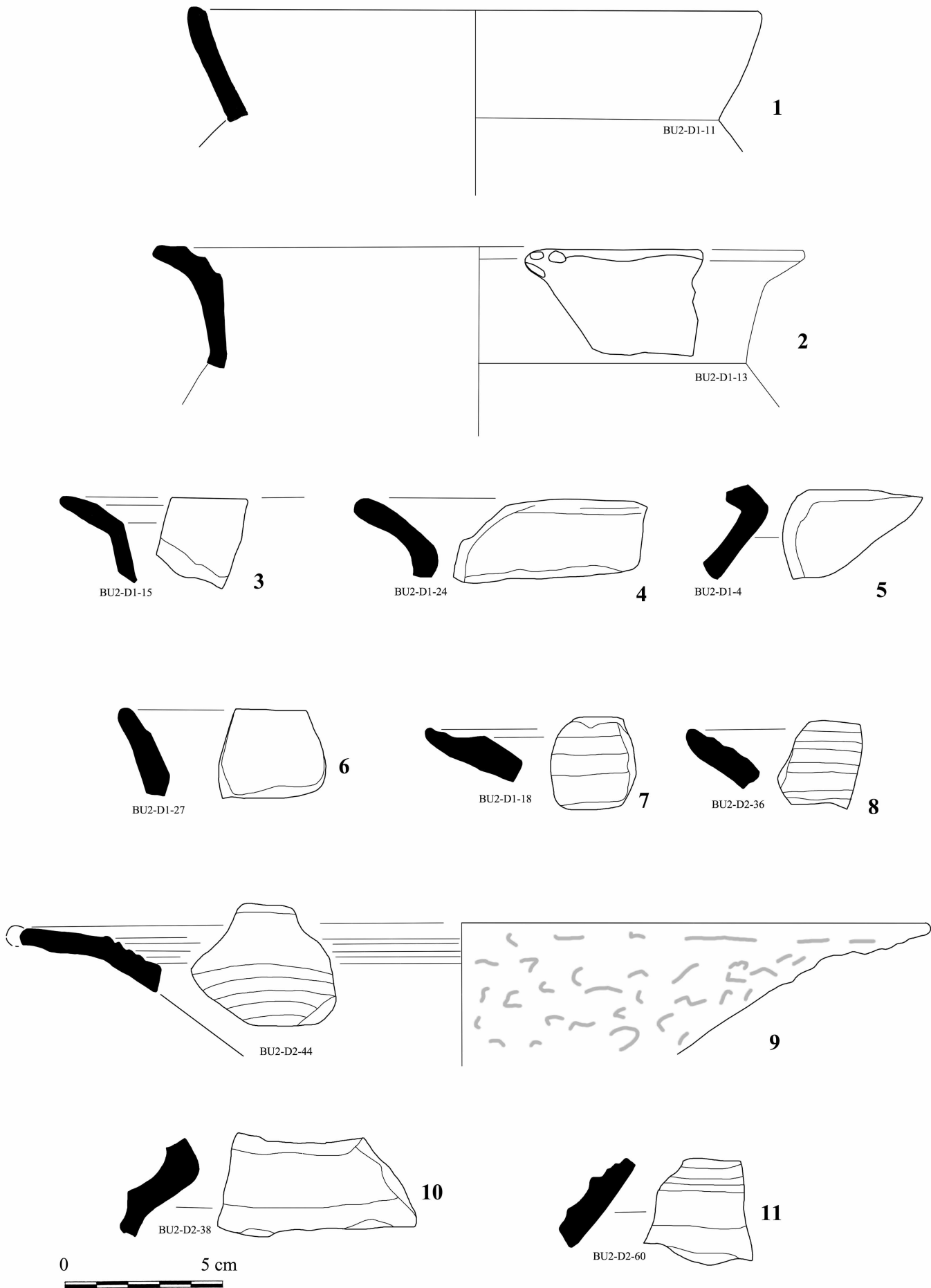


**Figure 43 - Butte BU10, zone sud, coupe stratigraphique nord-sud selon G-H.**



**Figure 44 - Butte BU10, zone sud, coupe stratigraphique est-ouest selon I-J.**





**Figure 45 - Butte BU2, couche C0, céramique du premier âge du Fer.**

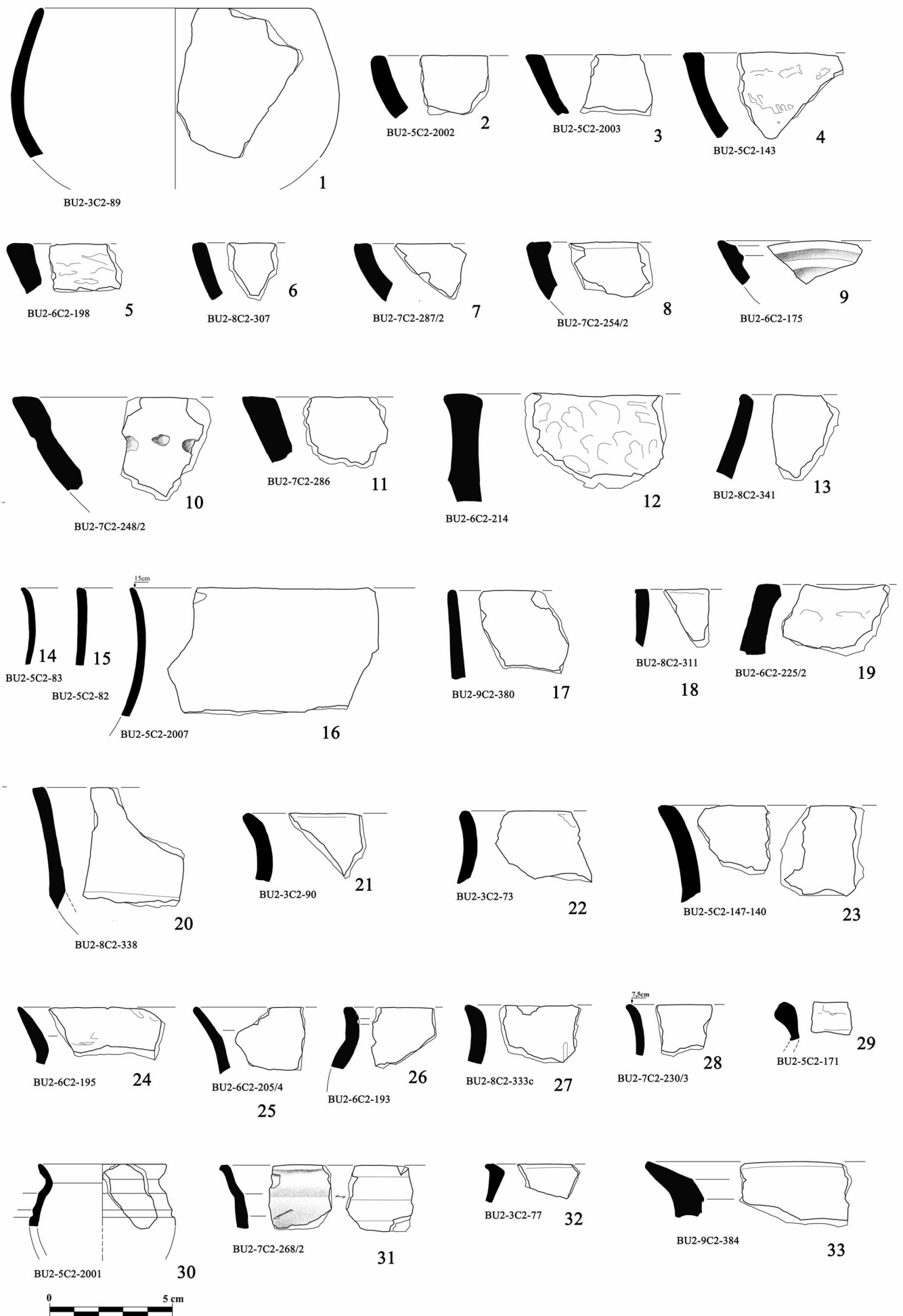
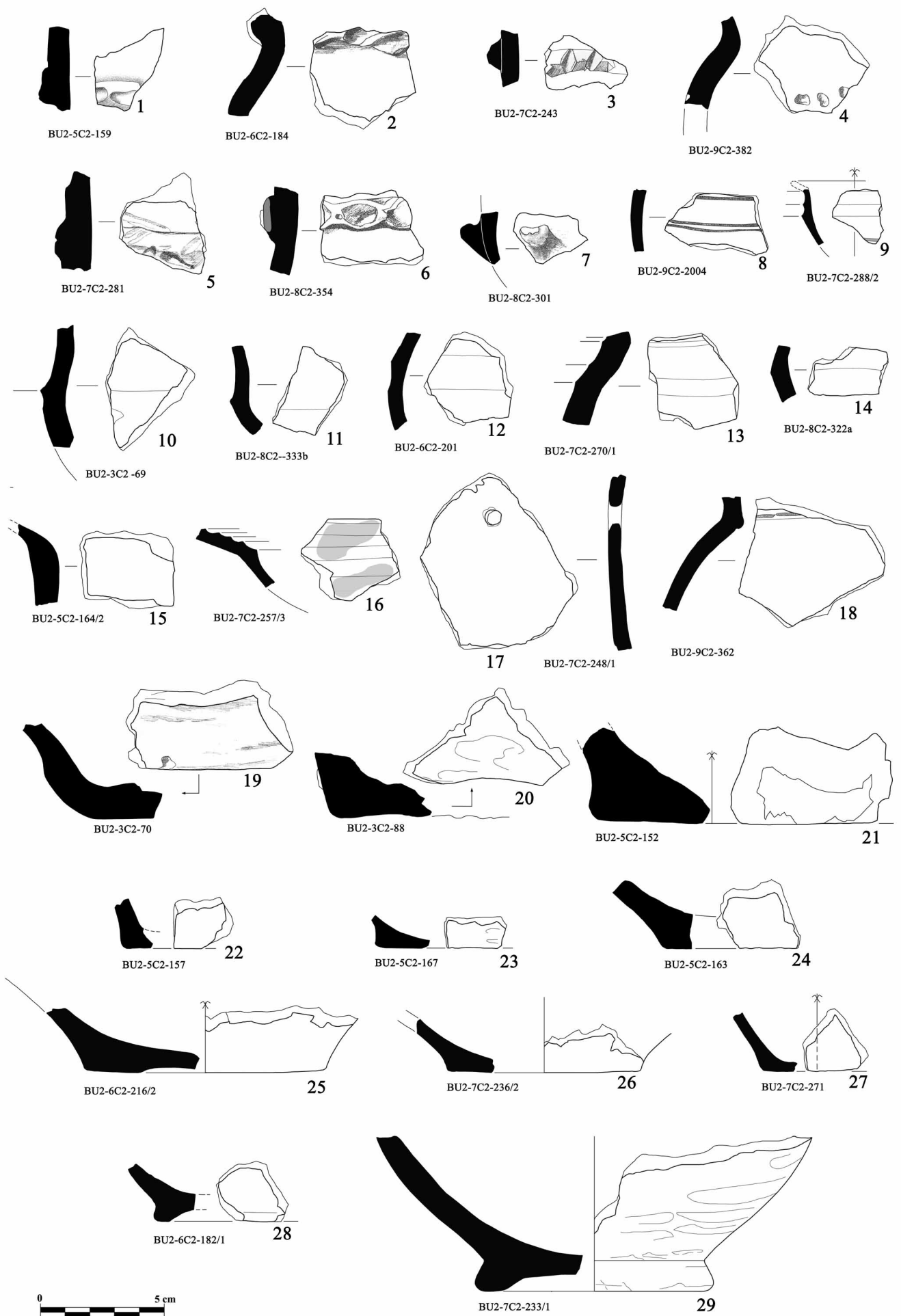
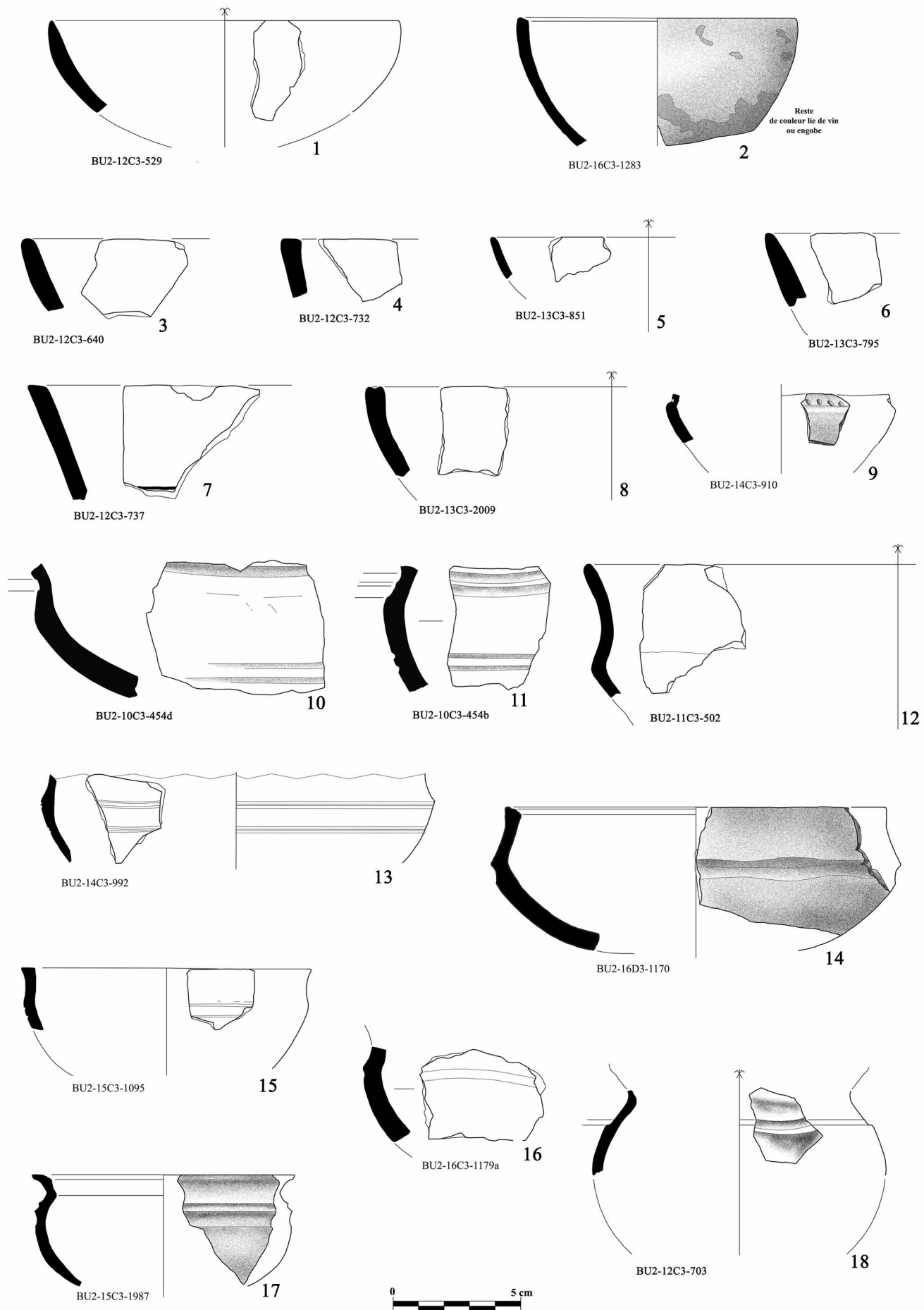


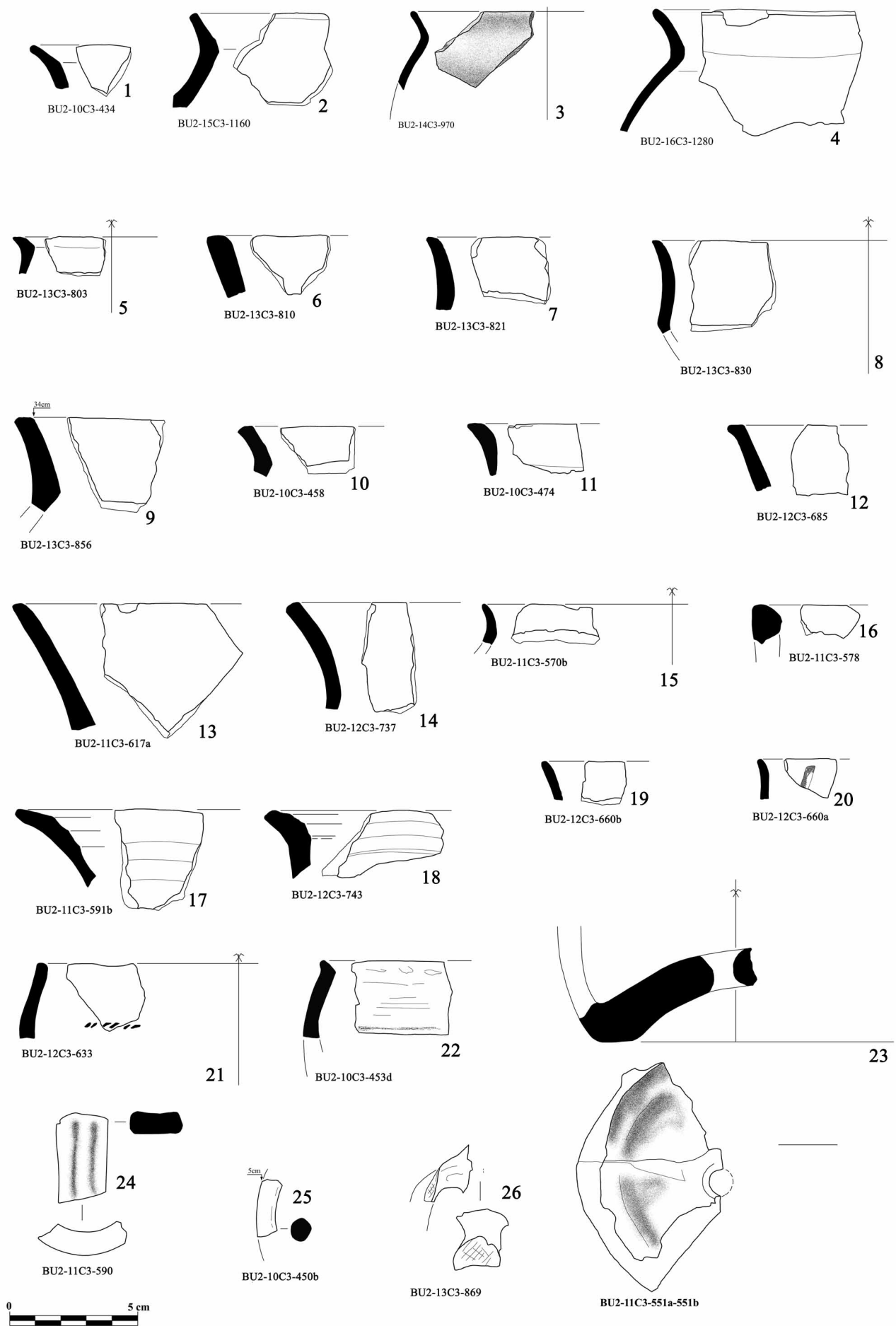
Figure 46 - Butte BU2, couche C2, céramique du premier âge du Fer.



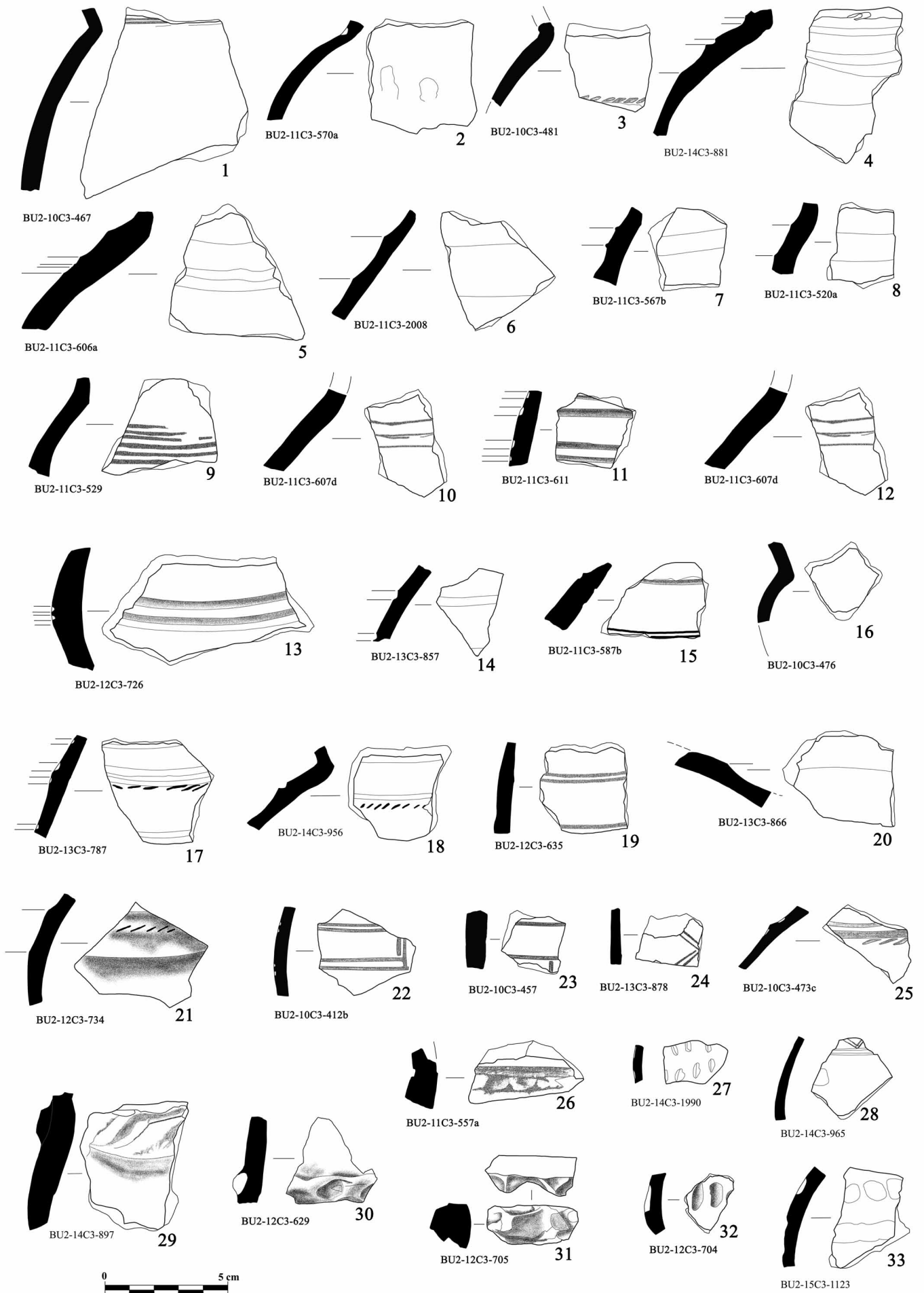
**Figure 47 - Butte BU2, couche C2, céramique du premier âge du Fer.**



**Figure 48 - Butte BU2, couche C3, céramique transition Bronze final / premier âge du Fer.**



**Figure 49 - Butte BU2, couche C3, céramique transition Bronze final / premier âge du Fer.**



**Figure 50 - Butte BU2, couche C3, céramique transition Bronze final / premier âge du Fer.**